

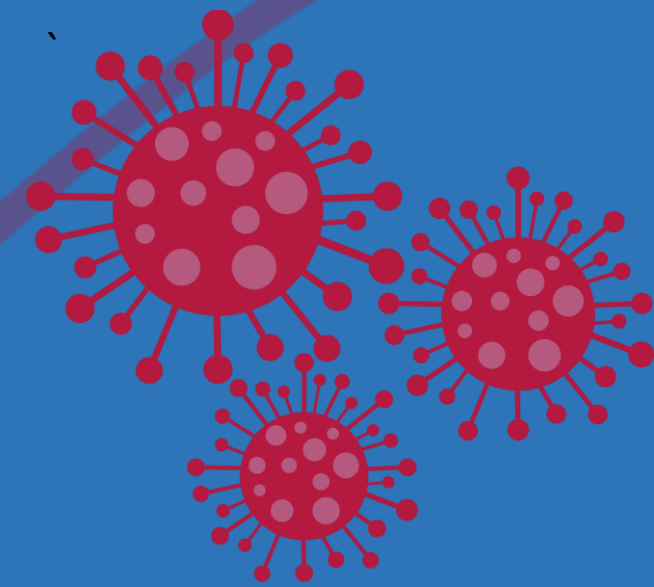
Incidence Of Cardiomyopathy In Post – Covid-19 Patients With Perspectives On Its Management. A Cross-sectional Multi-center Prospective And Partially Retrospective Study In Tripoli-libya

CLINICAL . PH . ALI N . ALDUREEDI



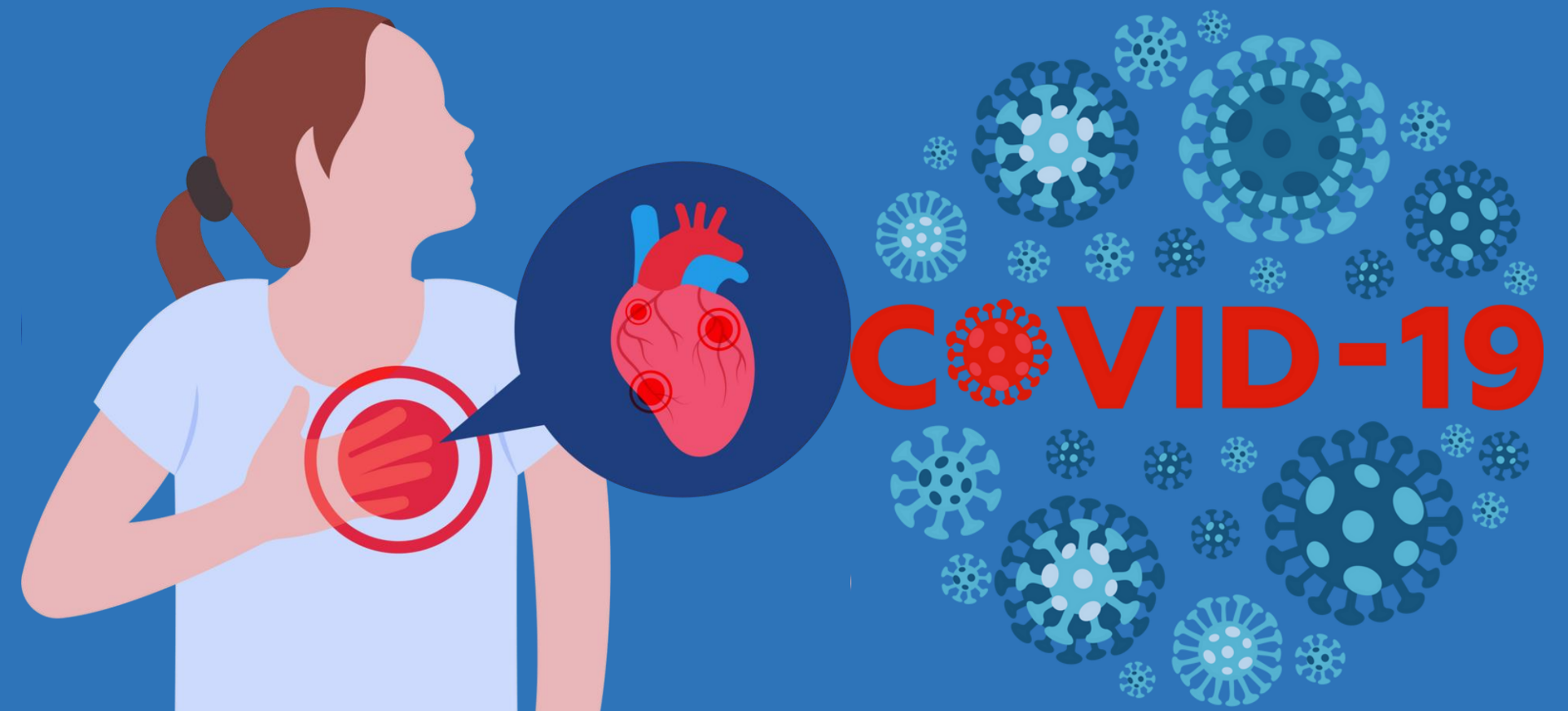
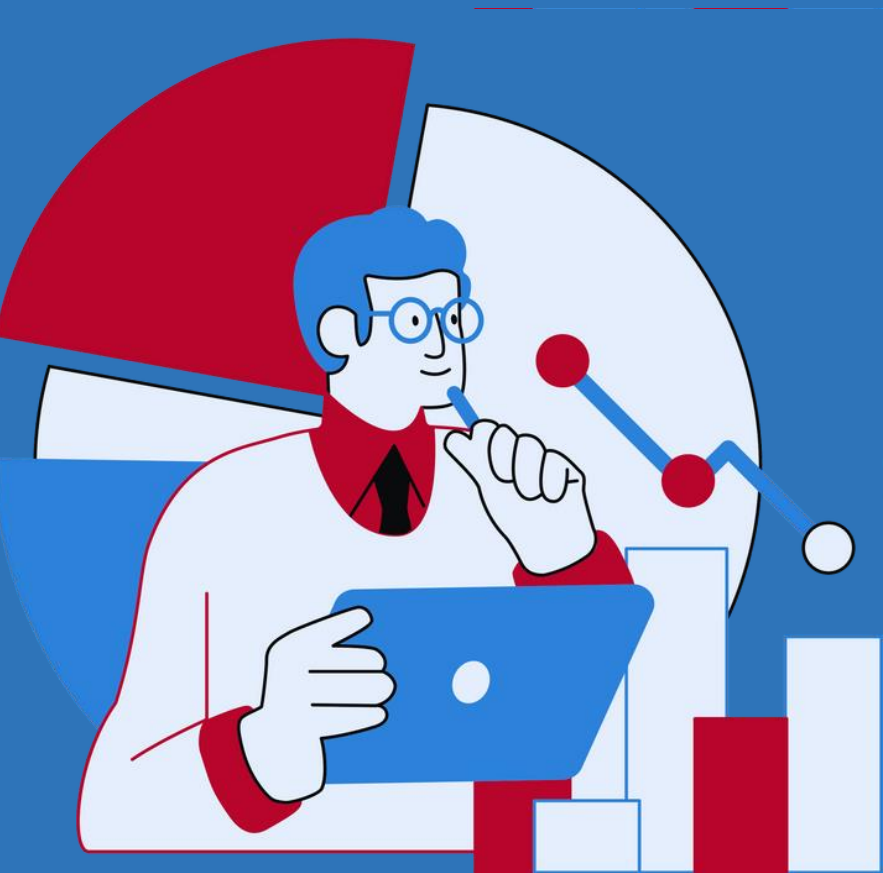
Clinical.PH.Ali Aldureedi

M.C:62409093



OBJECTIVES :

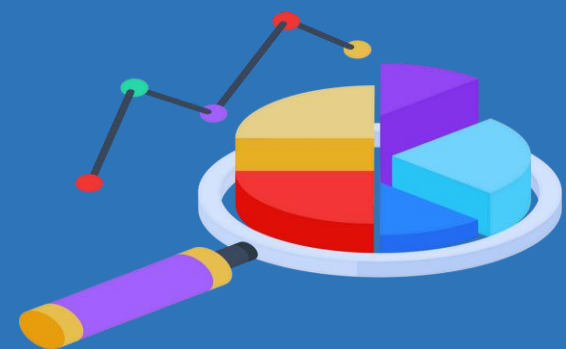
To Get An Overview On The Prevalence Of The Disease Among Post-covid-19 Exposed Patients In Two Isolation Centers In The Capital Tripoli, Libya And To Evaluate The Management Policies Followed At Domestic Hospitals.



METHODS AND STUDY DESIGN

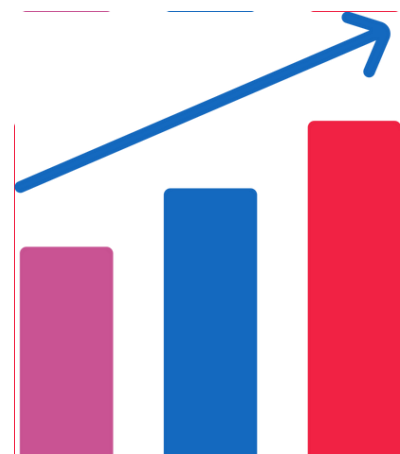
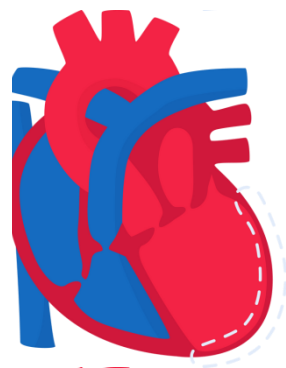


- ❖ (645) Patients Were Enrolled In The Study From Two Isolation Centers, Tripoli University Hospital And Tripoli Medical Center.
- ❖ For The Purpose Of The Study, All Patients Were Having Cardiac Complications Either During Or Post Exposure To Covid-19 Pandemic.
- ❖ The Only Target Complication Investigated Was Cardiomyopathy.
- ❖ The Age Group Entitled In This Study Was 20- \geq 80 Yrs.

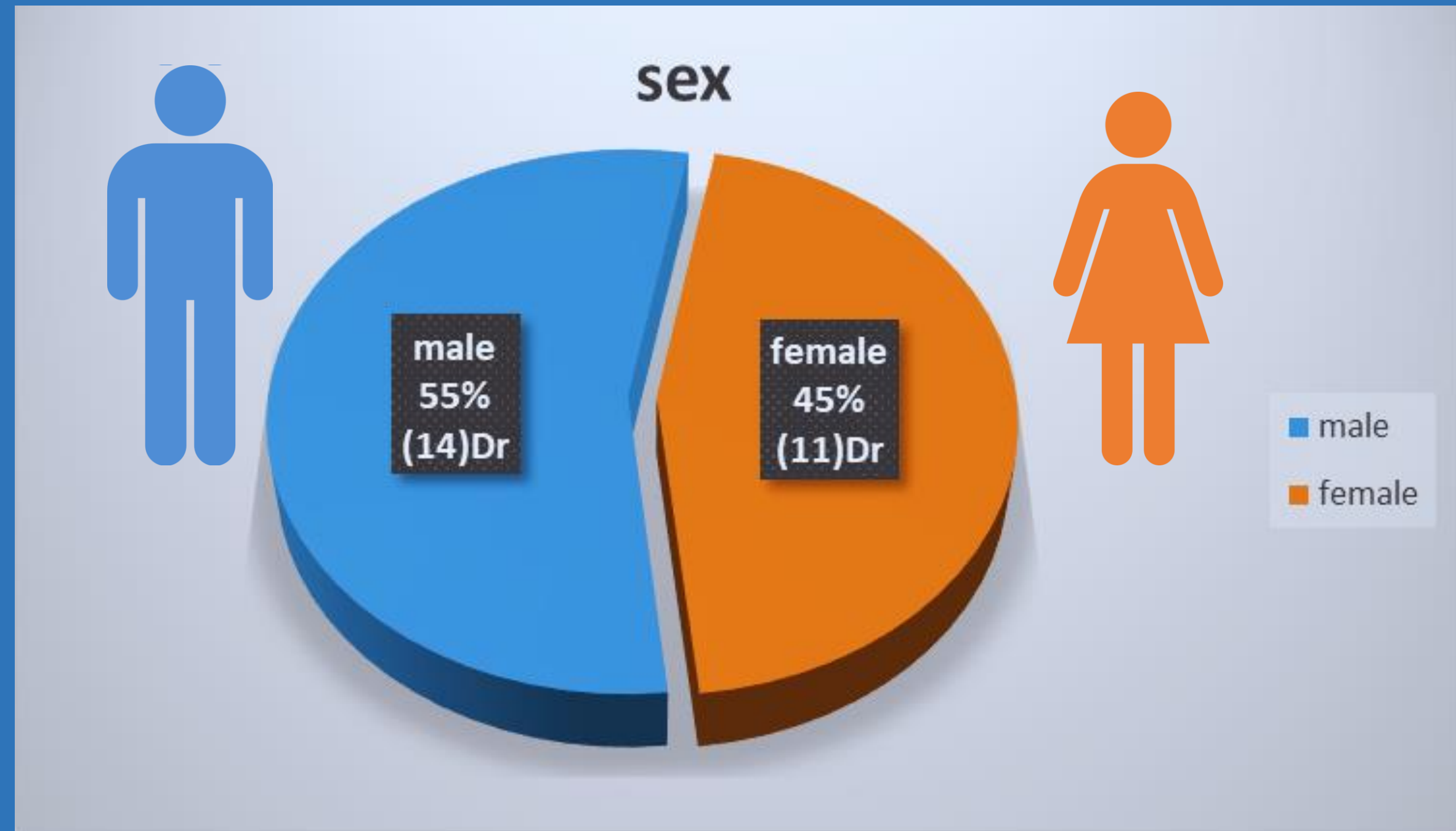
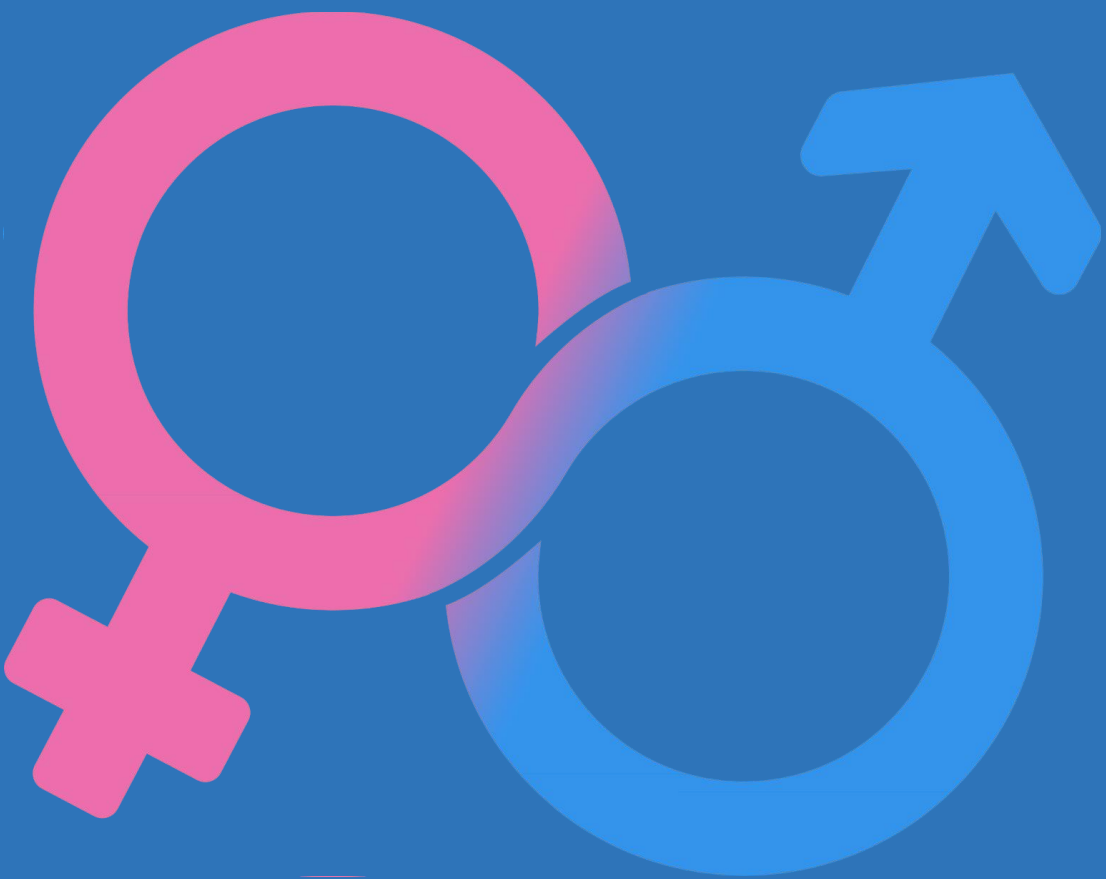




- ❖ **As The Main Aim Of The Study Focusing On The Management Policies Followed In Local Hospitals, Based On The Experience Of Cardiology Consultant On Charge .**
- ❖ **To Serve For The Other Aim Of The Study, A Correlation Between Development Of (CM) with Other Co-morbidities Was Estimated.**
- ❖ **Therefore, A Controlled Well Designed Multicenter Study Was Chosen To Conduct The Research.**
- ❖ **SPSS V.26 Was Used To Analyze Data And Whenever Possible $P < 0.05$ Was Picked-up For Significany.**

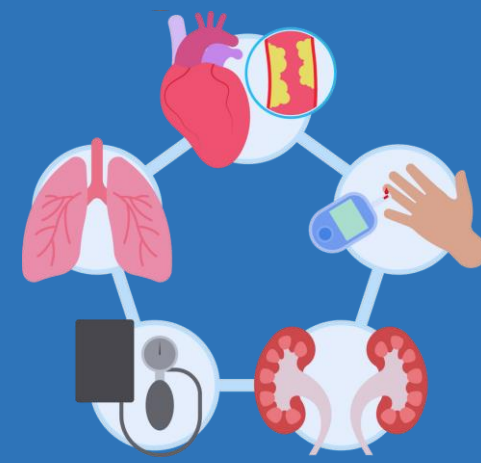
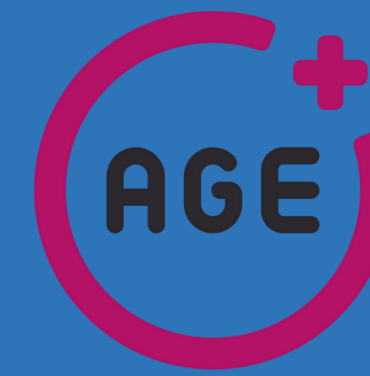
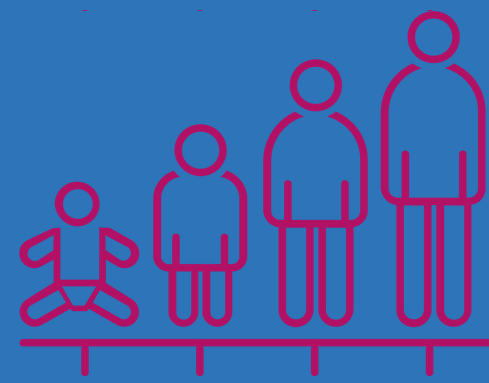


RESULTS

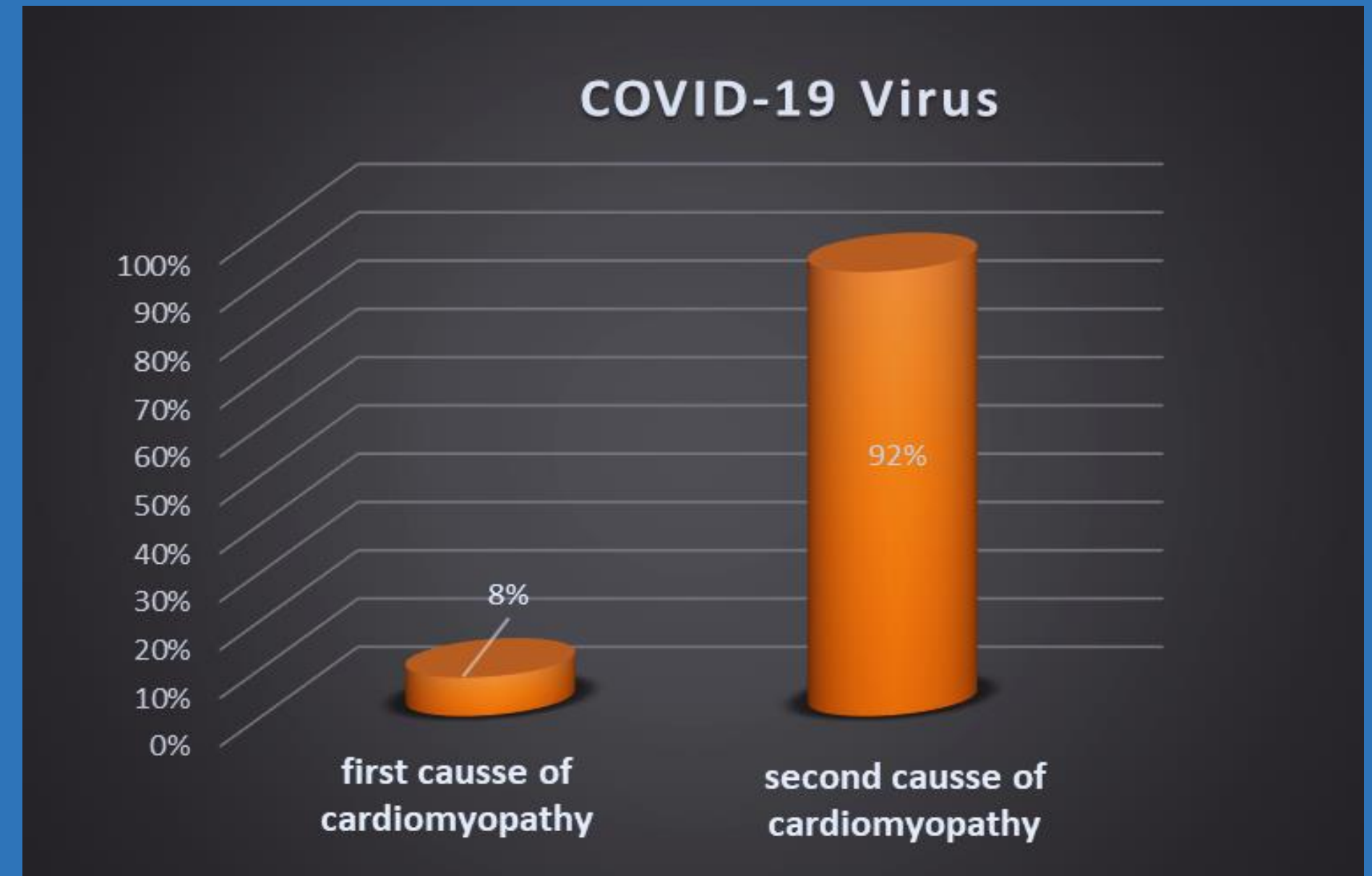
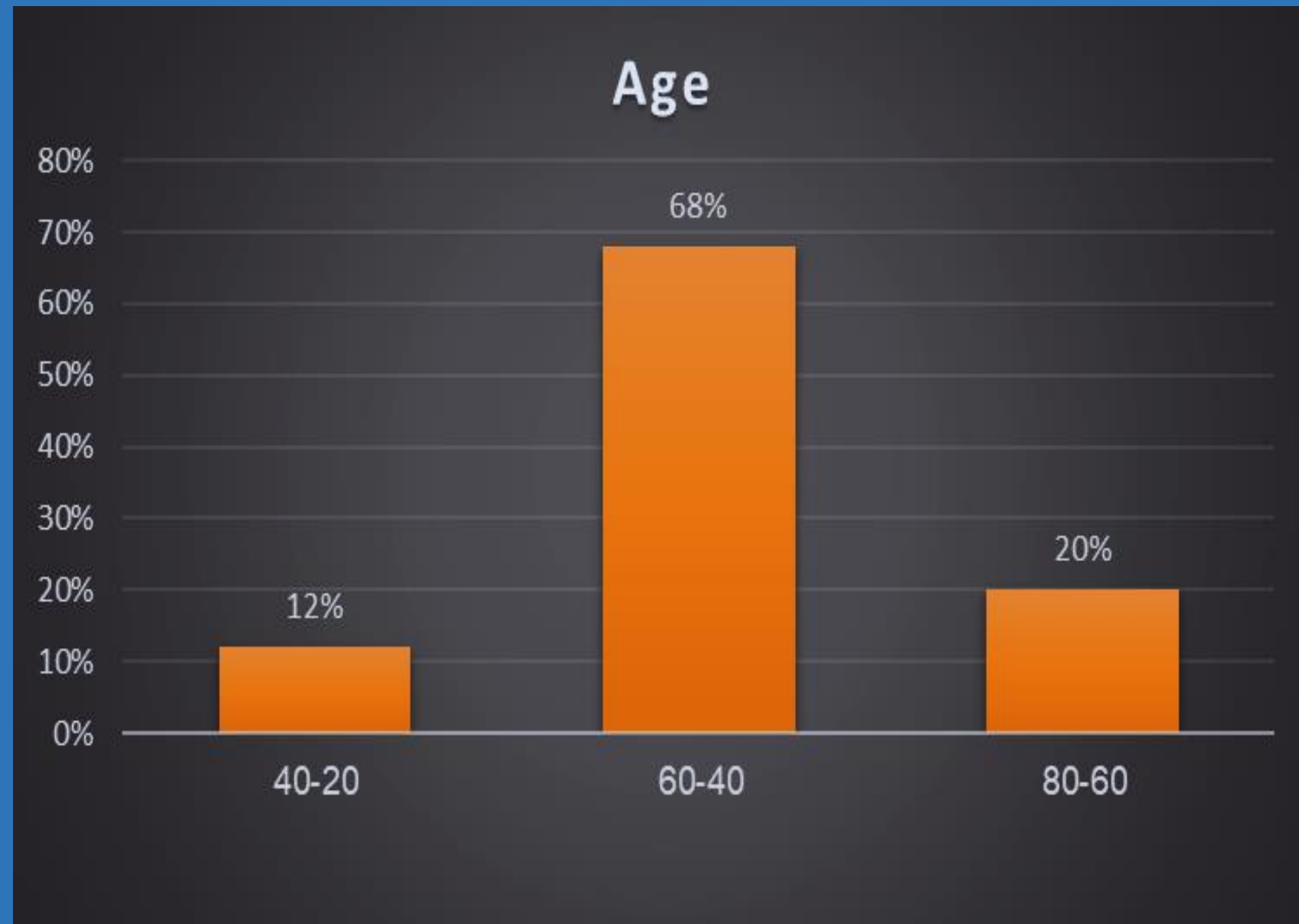


➤ As The Study Findings Outcomes Was Mainly Based On The Physicians Background On The Way How They Manage The Course And Progress Of The Disease , Just To Mention That A Total Of 25 Physicians (14 M - 11 F) Were Engaged In The Study Questionnaire In Whom 55% Were Males And The Rest Were Female Physicians .

RESULTS

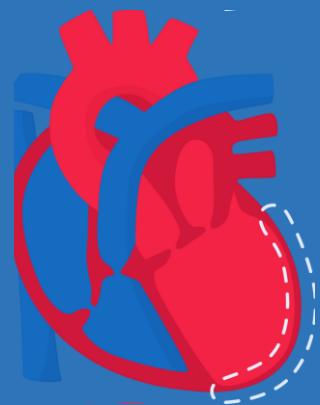
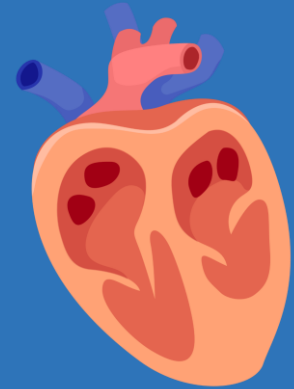
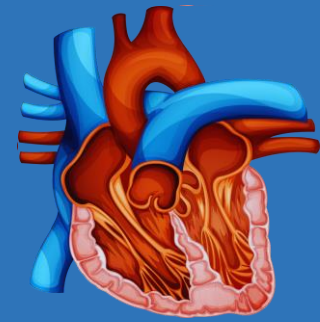


AGE GROUPS WITH CORRESPONDENT % CAUSES OF CM

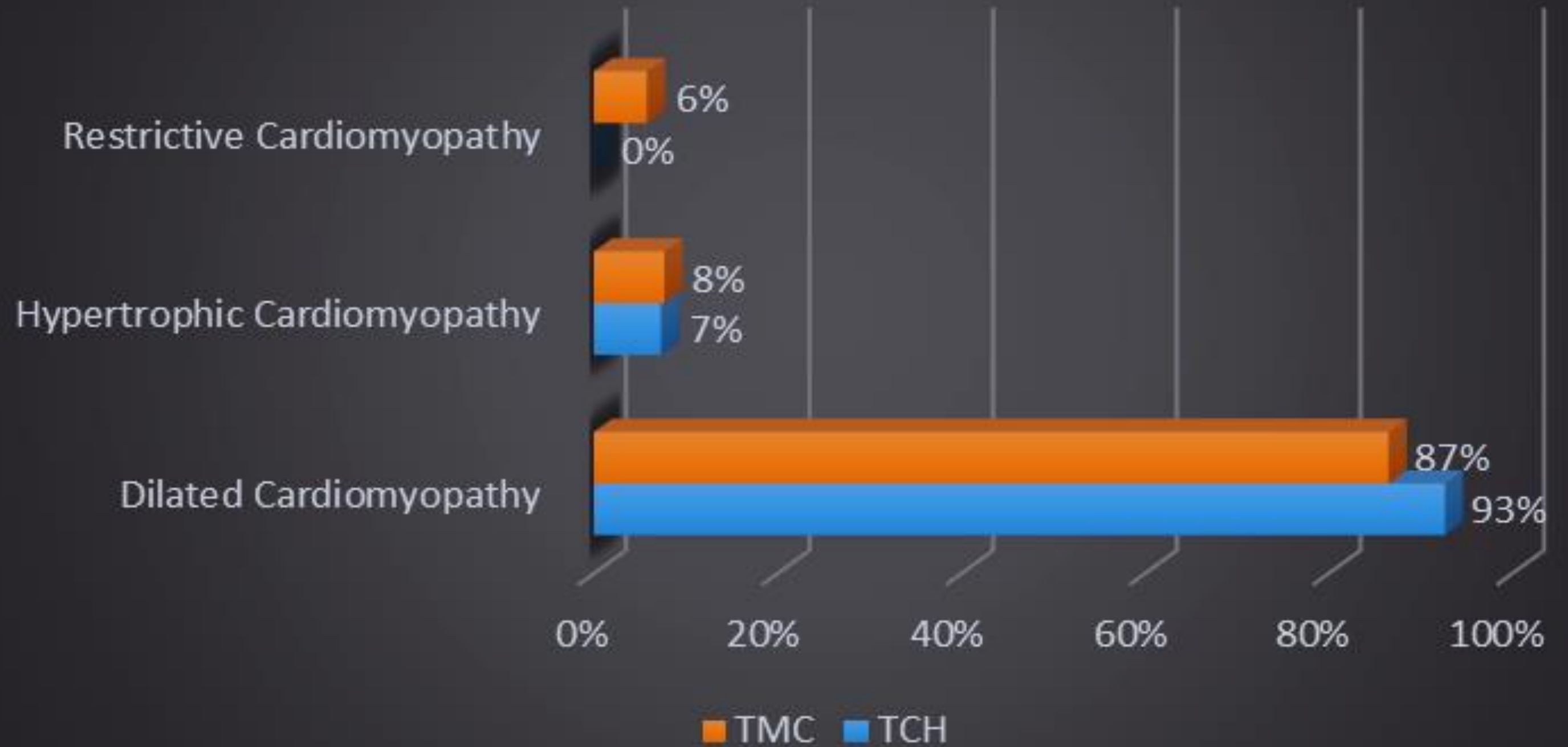


N=645, P<0.05

RESULTS



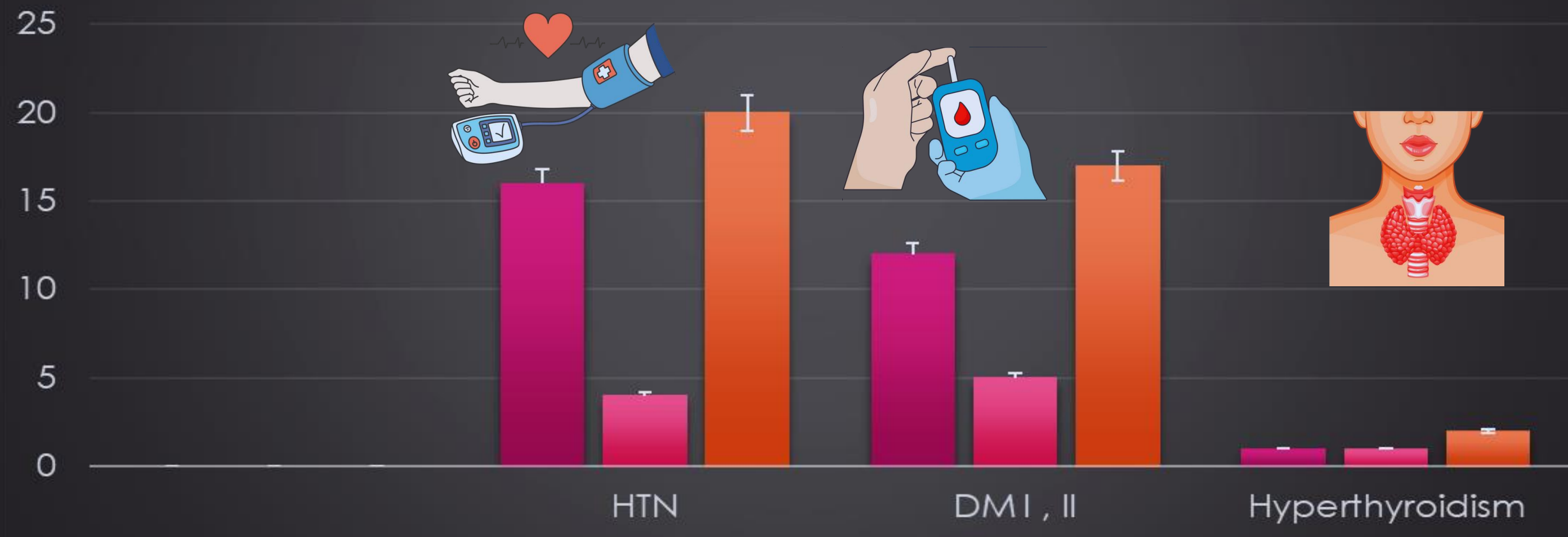
Type of Cardiomyopathy



N=645, P<0.05

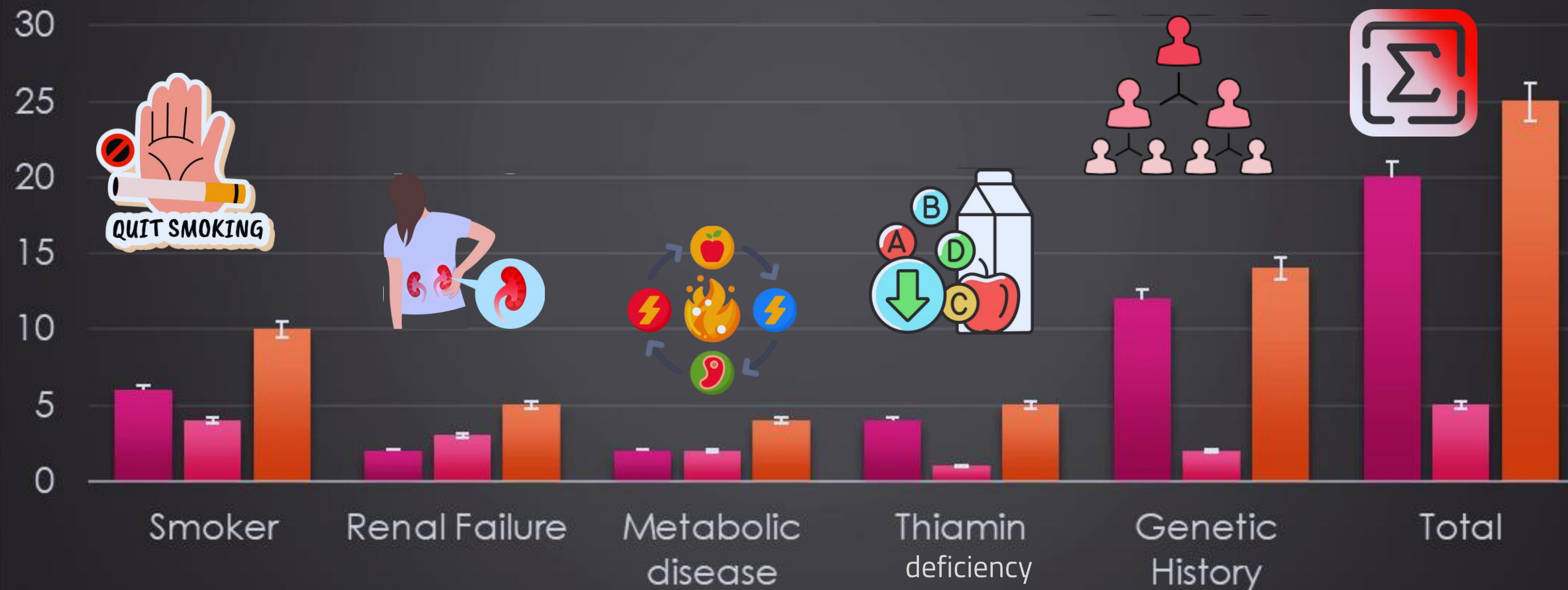
RESULTS

Co-morbidities associated with cardiomyopathy Based on physicians assessment



RESULTS

Co-morbidities associated with cardiomyopathy Based on physicians assessment

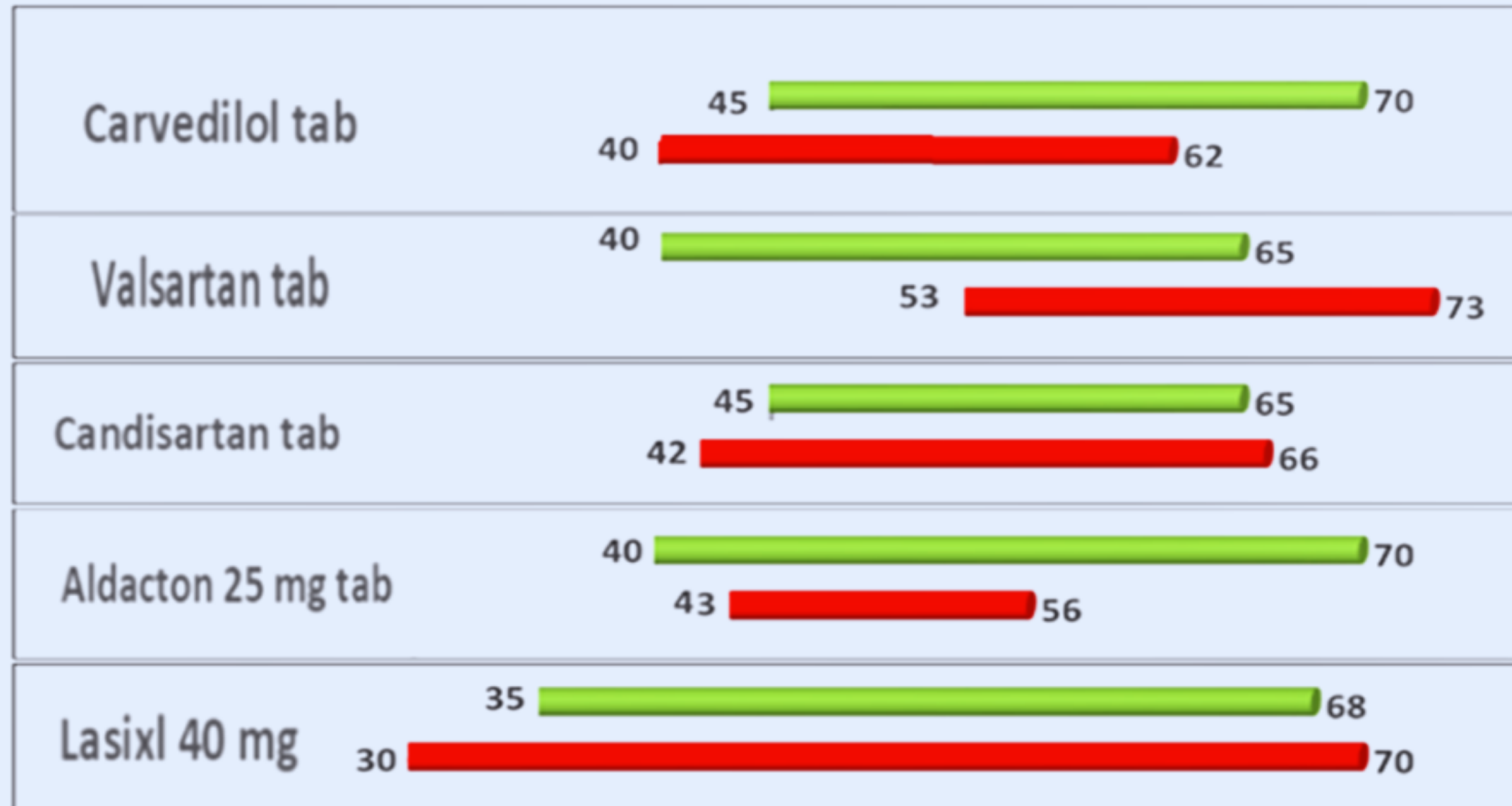


RESULTS

TCH

TMH

Dilated



DISCUSSION



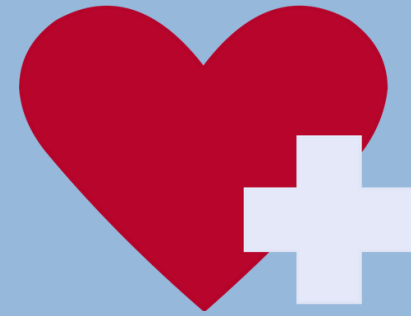
- ❖ **The Diversity And Experience-based Practice Used By Different Physicians Does Not Complied With The Mostly Recommended By International Societies And Therefore The Following Recommendation Is Advised.**
- ❖ **Engagement Of Clinical Pharmacotherapists Or Clinical Pharmacist In The Area Of Infectious Diseases Is Highly Recommended.**
- ❖ **The Use Of Diuretics Was Also Of Concern Since Furosemide (Lasix \hat{A}) Is Widely Used Instead As The More Recommended Aldosterone Antagonists.**
- ❖ **When Following International Guidelines, The Use Of ACE Inhibitors Was Much More Advisable Where Is At Domestic Level ARBS Are More Used.**

DISCUSSION

- ❖ **Despite Many Studies And Clinical Trials Have Recommended Guidelines On The Use Of Different Medicaments To Treat These Vulnerable Diseases, Still An Argument On Their Use Under Speculations.**
- ❖ **Owing To That This Pandemic Requires More Vigorous Attention, A Series Of Clinical Trials Based On Evidence And Experiences Is Of Great Value To Reach An Agreement On The Rational Use Of Medicaments.**
- ❖ **A Large Controlled Studies Are Required To Cross The Limitation Faced This Study In Particular.**



THANK YOU



Clinical.PH.Ali Aldureedi

M.C:62409093

