

Water pollution

Present by : Group F



ILOs

01 Describe water pollution

02 List types of water pollution

03 Describe source of water pollution

04 List effect of water pollution

What is water pollution?

water pollution is presence in groundwater of toxic chemicals and biological agents that exceed what is naturally found in the water.



Types of water pollution:

Chemical pollution

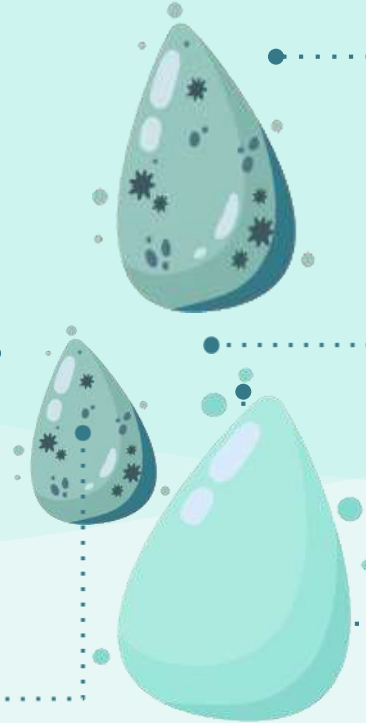
Nutrient pollution

Groundwater pollution

Oxygen-depletion pollution

Microbiological pollution

Surface water pollution



Source of water pollution:

Sources of water pollution, are grouped under two categories based on the origin of the pollutant:

- **Point source–pollution:** discharged to the environment through pipes, sewers, ditches, etc. from sources such as factories or sewage treatment plants
- **Nonpoint source-pollutants:** discharged over large areas rather than a single point of entry (agricultural runoff, municipal wastes, construction sites, mining wastes, etc.)

The Most Common Types of Water Contamination:

- Agricultural



- Sewage and wastewater

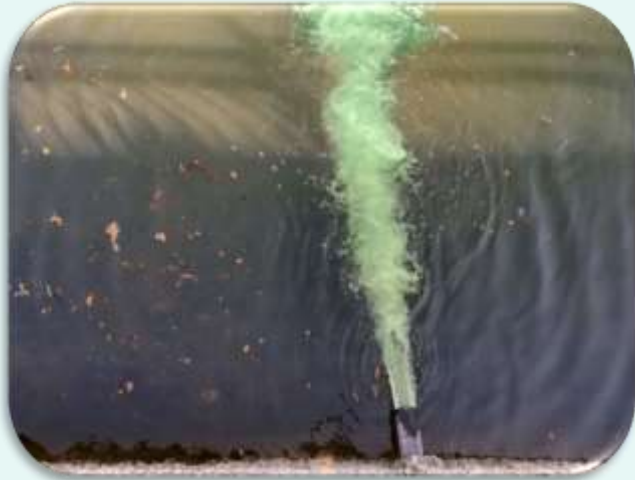


- Oil pollution



The Most Common Types of Water Contamination:

- Radioactive substances



- Plastics and garbage



Effect of water pollution:

- **Death of Aquatic Animals.**

The main problem caused by water pollution is that it kills life that depends on these water bodies. Dead fish, crabs, birds and sea gulls, dolphins, and many other animals often wind up on beaches, killed by pollutants in their habitat.



Effect of water pollution:

- **Spread of Disease.**

Humans are affected by this process as well.

People can get diseases such as hepatitis by eating seafood that has been poisoned. In many poor nations, there is always outbreak of cholera or typhoid infections, along with diarrhea as a result of contaminated drinking water consumption.

- **Disruption of Food Chain.**

Toxins within water can harm aquatic organisms, thus breaking a link in the food chain

Effect of water pollution:

- **Growth of Algae.**

Urea, animal manure and vegetable peelings are food for algae. Algae grow according to how much waste is in a water source. Bacteria feed off the algae, decreasing the amount of oxygen in the water. The decreased oxygen causes harm to other organisms living in the water.



Effect of water pollution:

- **Soil Erosion.**

The erosion of soil into waterways causes flooding, especially with heavy rainfall.



Effect of water pollution:

- **Harm Animals.**

Littering by humans like plastic bags, clog and suffocate aquatic animals



summary

- Water pollution is a serious environmental issue that can be caused by many contaminants. Human health can be affected by consuming, entering, or washing in polluted water.
- There are various ways to help to limit water pollution. If a person experiences any effects of water pollution, they should speak to their doctor.

Reference

- <https://www.environmentalpollutioncenters.org/water/>
- <https://www.soest.hawaii.edu/GG/ASK/waterpol3.html>
- <https://studyres.com/doc/20700397/sources-of-water-pollution>
- <https://www.envirotech-online.com/news/water-wastewater/9/breaking-news/what-are-the-different-types-of-water-pollution/51055>
- <https://www.fwi.co.uk/arable/ways-to-reduce-the-risks-of-water-pollution>
- <https://www.nrdc.org/stories/water-pollution-everything-you-need-know>
- <https://www.medicalnewstoday.com/articles/water-pollution-and-human-health#combatting-water-pollution>
- https://www.slideshare.net/harmeengrewal94/water-pollution-causessources-and-prevention?qid=a5390ddb-5267-465d-b2f7-dd15f55d7fd8&v=&b=&from_search=1

Thank
you

