



# How Dose lupus Affect The Kidneys



Amal Alghool (1574) 4th year  
Faculty Of Medicine

## Introduction

### What's The Systemic Lupus Erythematoses ?

An autoimmune disease in which the body's immune system mistakenly attacks healthy tissue in the body and affects multiple organs & body systems .

#### \*Etiology

unkown but factors that effect include

- I.Genetics
- II.Environment
- III.Drugs (1)



## Affect of SLE on kidney

When SLE attacks a kidney, it causes a disease known as lupus nephritis, which results in nephritis, the smallest unit of kidneys that filter blood from waste products, toxic substances, excess fluids and salts and excrete it out of the body through urination, and SLE that impairs the kidneys from functioning And its function, accumulating these substances that must be disposed of naturally in the body causing many symptoms .(2)

## Method

In this study, collected data on the clinical and immunological features of SLE reported from eleven different Arab countries Data were collected at Jordan University Hospital, Department of Medicine between August 2016 and August 2017 Family history of SLE was present in 8.3%..

## Discussion

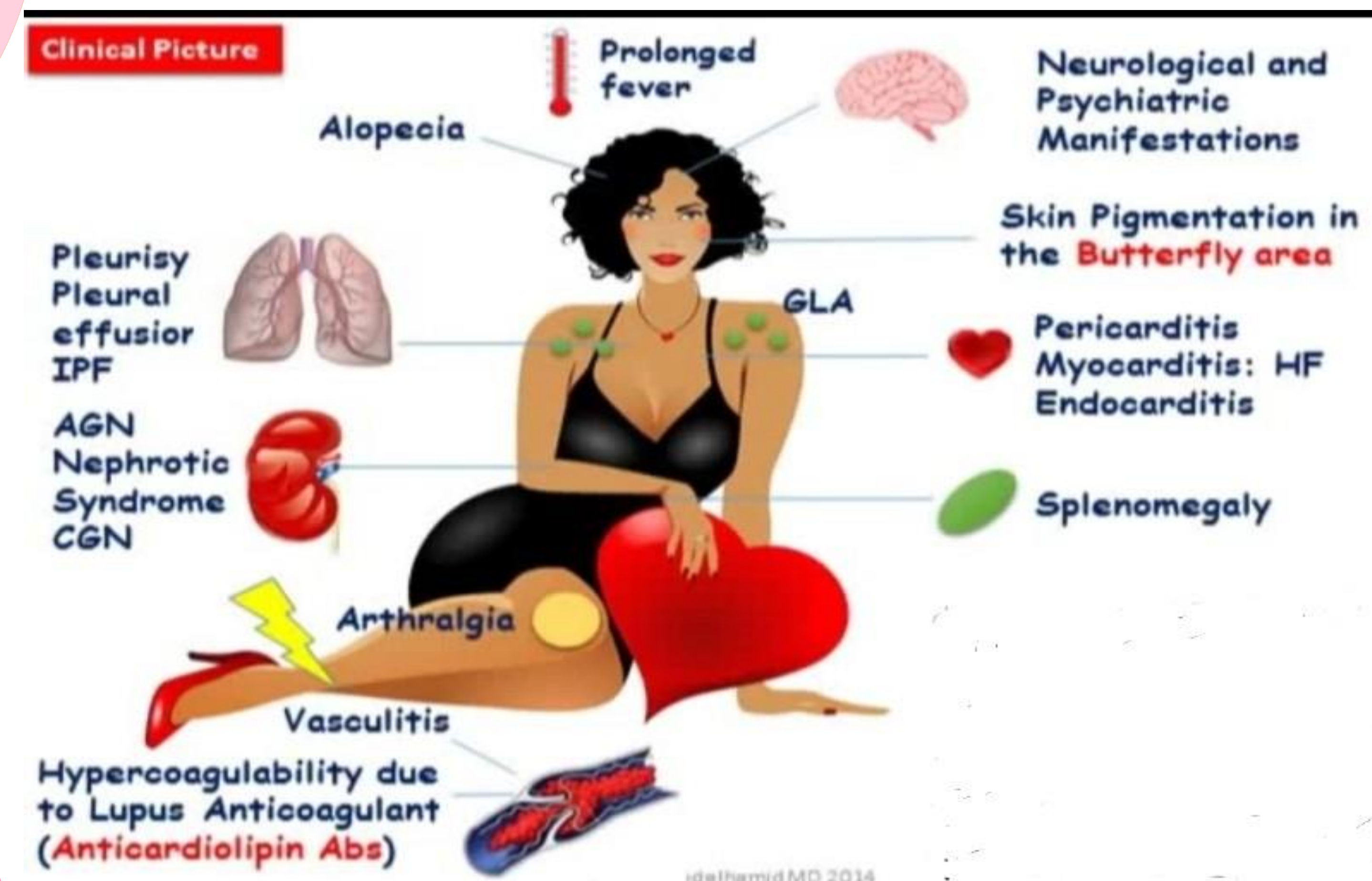
This study was conducted at the Jordan University Hospital, Department of Medicine between August 2016 and August 2017. Of a total of 3,273 patients analyzed, females comprised 89.3% and males 10.7% .The commonest clinical manifestation was arthralgia and/or arthritis, which occurred in 81.1% anemia (55.6%), fatigue (53.4%), malar rash (53.1%) and renal manifestations (50.4%).(3)

## Conclusion

There should be health education regarding the negative impact of disease activity on the patients . help physicians to understand and provide better support to SLE patients beside rapid meticulous control of disease activity .

## References

- erythematosus S. Systemic lupus erythematosus: MedlinePlus Medical Encyclopedia. Medlineplus.gov. <https://medlineplus.gov/ency/article/000435.htm>. Published 2020. Accessed July 1, 2020.
- Lupus and kidney disease (Lupus nephritis). National Institute of Diabetes and Digestive and Kidney Diseases. <https://www.niddk.nih.gov/health-information/kidney-disease/lupus-nephritis>. Accessed June 14, 2019.
- Khanfir MS, Houman MH, Cherif E, Hamzaoui A, Souissi S, Ben Ghorbel I, et al. TULUP (TUnisian LUPus): a multicentric study of systemic lupus erythematosus in Tunisia. Int J Rheum Dis. 2013;16:539–546 .



## Result

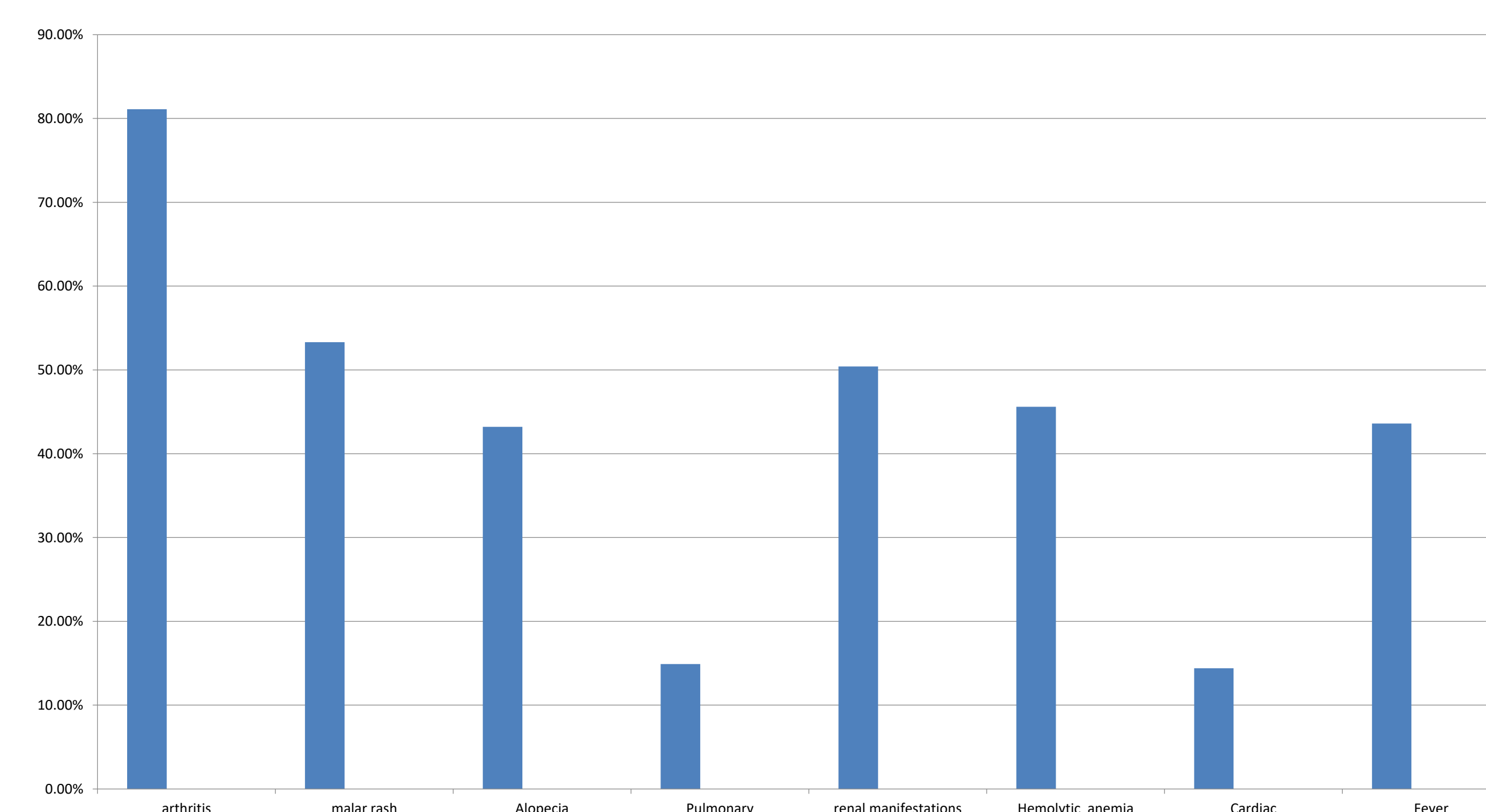


Figure Show Frequency of systemic lupus erythematosus manifestations in Arab world .